



Nature

Prestige

Rest

FUNDMAN.EU

Tennis Campione

A balcony over nature,
A courtside seat to the game

Starting Q2/Q3 2026

Via Posero, 22061 Campione d'Italia CO, Włochy



What is Tennis Campione?

Nature

Prestige

Rest

FUNDMAN.EU

Tennis Campione – Apartment Project on Via Posero, Campione d'Italia

The new Tennis Campione development, located on the hillside of Via Posero, is an exclusive apartment complex designed for comfort, prestige, and harmony with nature.

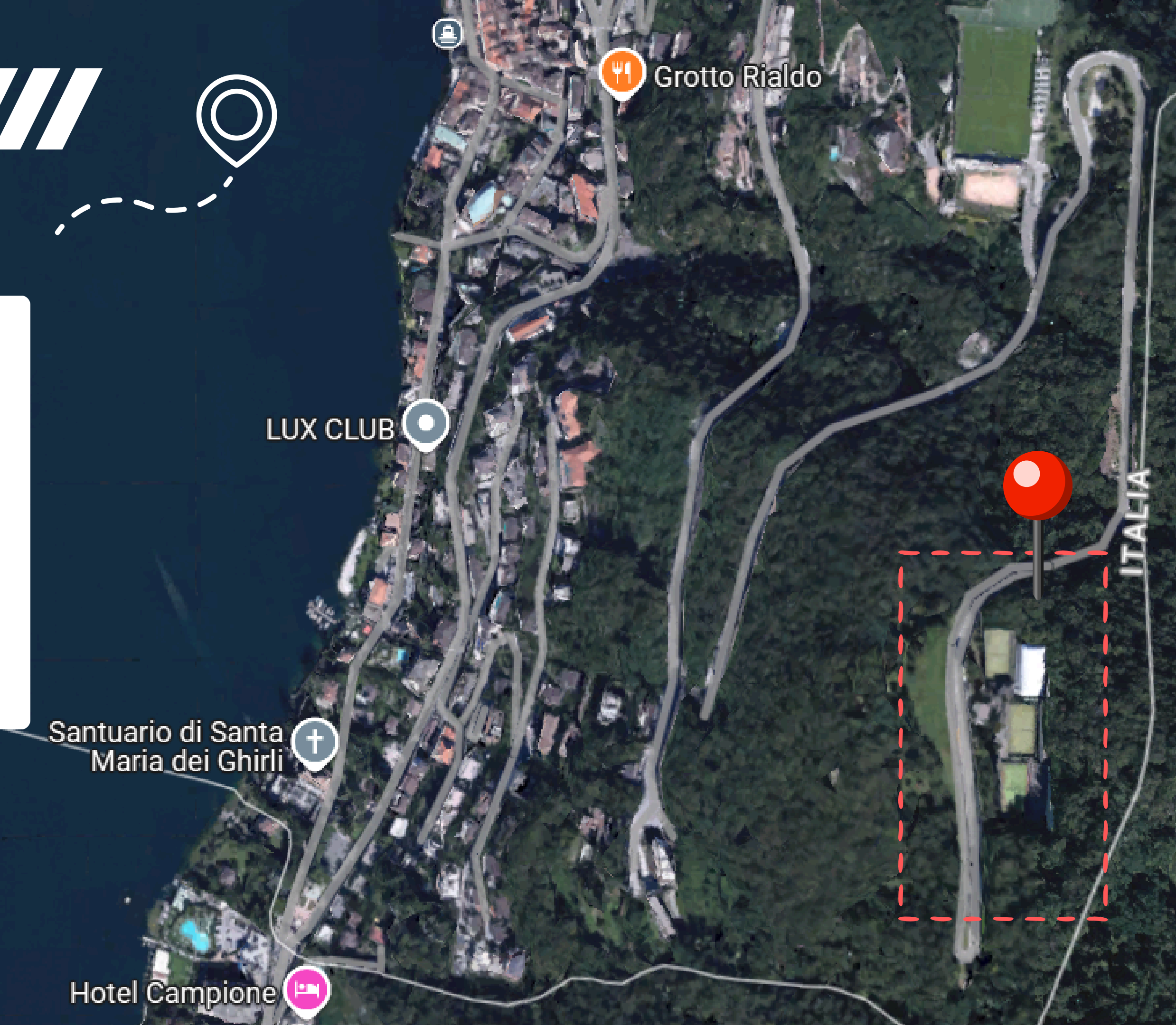
Thanks to its elevated position, each apartment will offer panoramic views of Lake Lugano and the Alps, providing residents with a breathtaking visual experience and a serene atmosphere. The project combines modern architecture with luxurious finishes, creating an ideal space for both permanent residence and a vacation investment.

The name Tennis Campione pays tribute to the site's history while setting a new standard for living in Campione d'Italia—blending an active, sports-oriented lifestyle with exclusive design and a prime location near Lugano and major international business and cultural hubs.



Via Posero, 22061 Campione d'Italia CO, Włochy





LOCATION

Via Posero in Campione d'Italia is a unique location perched on a picturesque hillside, offering panoramic views of Lake Lugano and the surrounding Alps. Campione d'Italia, an Italian enclave surrounded by Swiss territory, blends the charm of Italy with the prestige of its Swiss surroundings.

The plot on Via Posero provides an exclusive living space with excellent sun exposure and close proximity to nature. Its elevated position ensures peace and privacy while offering convenient access to Lugano (approx. 10 km) and major international airports in Milan and Zurich. This is an ideal setting for those who appreciate luxury, tranquility, and breathtaking scenery.

// Architecture

FUNDMAN.EU



The Tennis Campione complex consists of three modern buildings that blend seamlessly into the natural hillside landscape. The terraced layout maximizes panoramic views of Lake Lugano and the surrounding Alps, while complementing the character of the existing architecture.

The buildings feature a contemporary design, expansive glass facades, and an elegant, natural color palette that harmonizes with the environment. Underground garages provide convenience for residents, while spacious terraces and balconies extend the interiors into the breathtaking landscape.

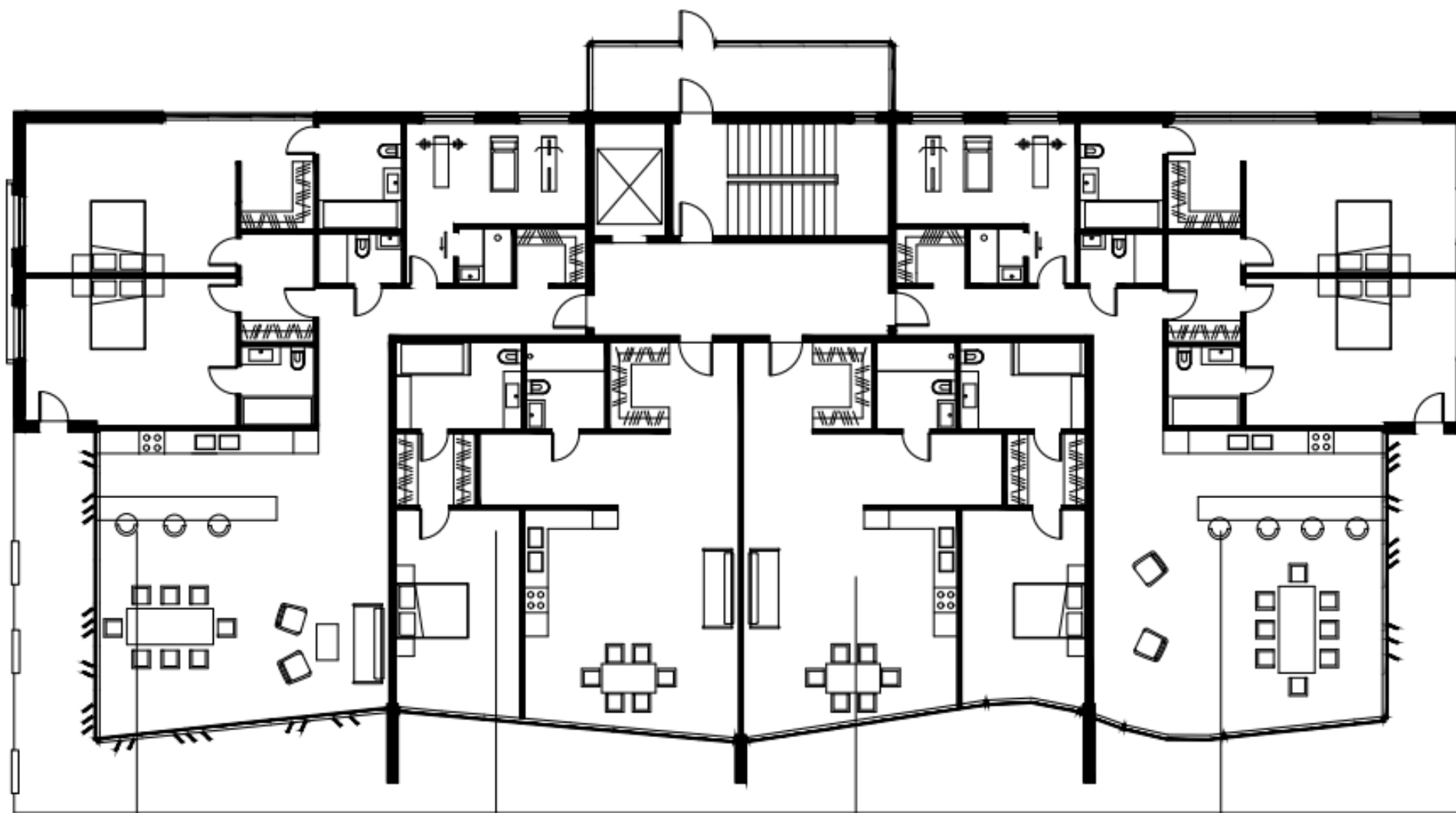
This development combines sophisticated design, functionality, and prestige, creating an exceptional place to live in the heart of Campione d'Italia.



Via Posero, 22061 Campione d'Italia CO, Włochy

4 BUILDINGS

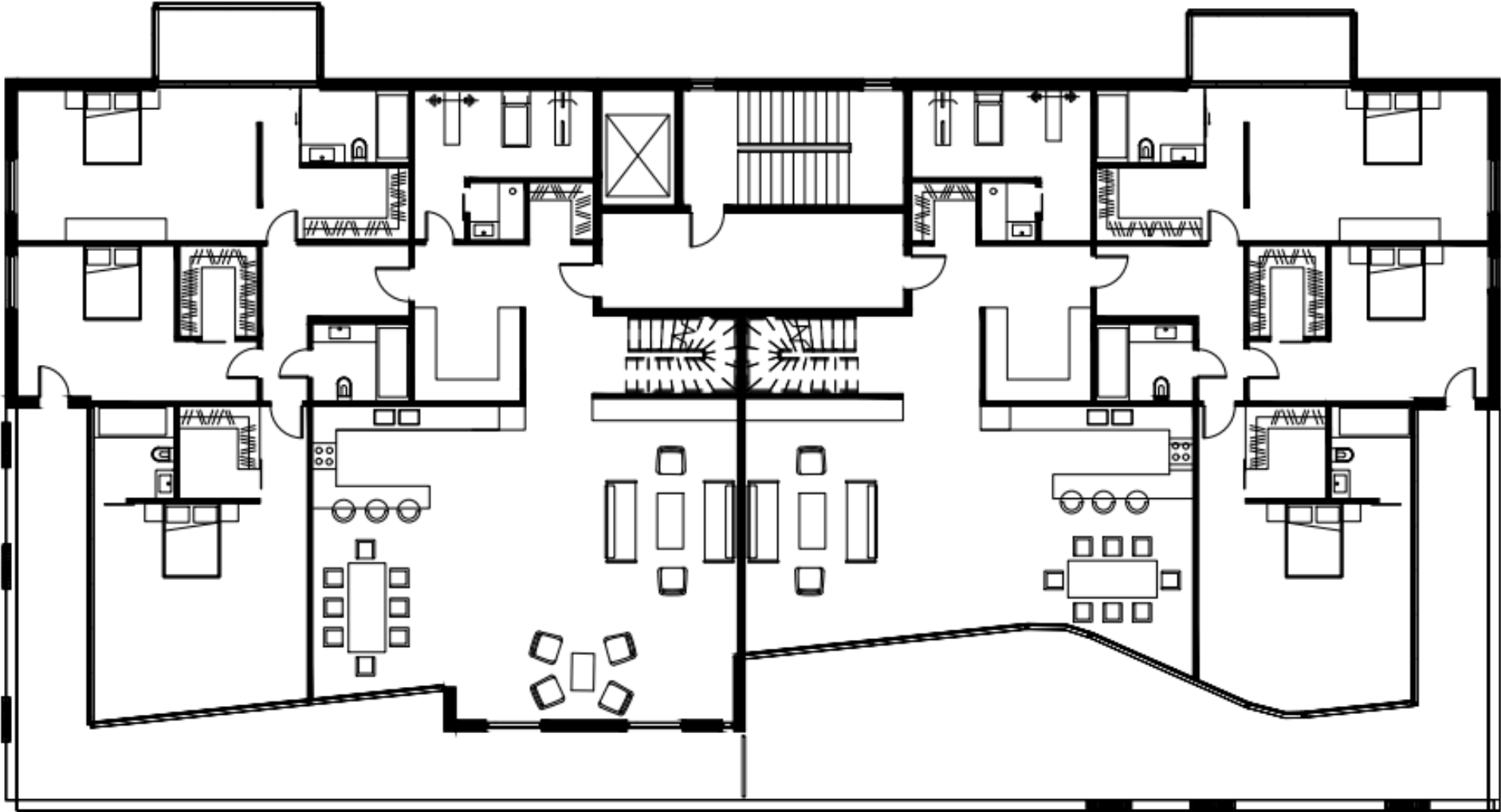
Several types of apartments with an area of 85 m² – 168 m²



0.1	APARTAMENT D0_1	0.2	APARTAMENT D0_2	0.3	APARTAMENT D0_3	0.4	APARTAMENT D0_4
168.22m ²	BLOCK D	87.50m ²	BLOCK D	85.34m ²	BLOCK D	168.96m ²	BLOCK D

DESIGN TEAM / GRUPPO DI PROGETTAZIONE	PHASE / FASE	DRAWING TITLE / titolo del disegno	SCALE / scala
arch. Przemysław Czubaj arch. Bartomiej Zembaczyński Sasha Horiaczew	CONCEPT / CONCETTO	BLOCK "D" - FLOOR 0 -alternative 1 BLOCCO "D"- PIANO 0 -alternative 1	1:200

Penthouse
over 250 m2



2.1	APARTAMENT C07
275.11m2	BLOCK C

2.2	APARTAMENT C08
257.61m2	BLOCK C

PRZEMYSŁAW CZUBAJ BIURO ARCHITEKTONICZNE 30-058 Kraków ul. Lea115/52 NIP:677 115 95 98	DESIGN TEAM / gruppo di progettazione arch. Przemysław Czubaj arch. Bartomiej Zembaczyński Sasha Horiaczew	PHASE / fase CONCEPT / CONCETTO	DRAWING TITLE / titolo del disegno BLOCK "C" - FLOOR 2 BLOCCO "C"- PIANO 2	SCALE / scala 1:200
--	---	------------------------------------	--	------------------------

// Interior Design

- Spacious, open layouts that maximize natural light and highlight the panoramic views of Lake Lugano and the surrounding Alps, including peaks such as Monte Brè and Monte San Salvatore.
- High-quality finishing materials, including fine wood, natural stone, and modern glass elements, creating a harmonious and elegant aesthetic.
- Large windows and glass doors leading to private terraces and balconies, which serve as natural viewing platforms, offering residents uninterrupted views of the spectacular landscape and a serene outdoor retreat.
- Modern kitchens and bathrooms, equipped with top-of-the-line appliances and fixtures, ensuring both functionality and aesthetics at the highest level.
- Smart home systems, allowing personalized control of lighting, climate, and security systems, enhancing everyday comfort.

These interiors seamlessly blend contemporary design with natural elements, creating an ideal living space for those who wish to combine a luxurious lifestyle with the beauty of nature.

The apartments in the Tennis Campione development are designed for the most discerning clients who value luxury, comfort, and a close connection with nature. Each interior features:



**A BALCONY
OVER NATURE,
A COURTSIDE
SEAT TO THE
GAME**

Via Posero, 22061 Campione d'Italia CO, Włochy

SPORTS AND OUTDOOR ACTIVITIES:



- **Tennis Courts:** Exclusive on-site tennis courts, ideal for both recreational and professional players.
- **Water Sports on Lake Lugano:** Boating, kayaking, paddleboarding, and water skiing.
- **Hiking and Mountain Biking:** Trails around Monte Brè and Monte San Salvatore provide spectacular lake views.
- **Golf Courses:** Several prestigious golf courses are located nearby, including Golf Club Lugano (approx. 12 km).
- **Winter Sports:** Ski resorts such as Monte Tamaro (35 km), San Bernardino (80 km), and Madesimo (100 km) offer skiing and snowboarding options.

Via Posero, 22061 Campione d'Italia CO, Włochy



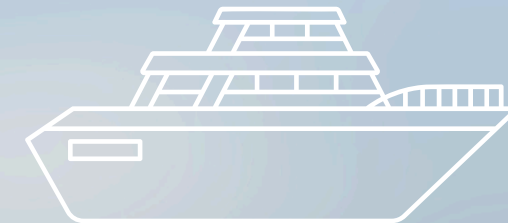
AIRPORTS AND TRANSPORTATION:



- **Milan Malpensa Airport (MXP)** – Approx. 75 km from Campione d'Italia. The largest international airport in the region, with direct connections to major global destinations.
- **Milan Linate Airport (LIN)** – Approx. 90 km from Campione d'Italia. A smaller airport, mainly handling European flights and domestic connections.
- **Bergamo Orio al Serio Airport (BGY)** – Approx. 110 km from Campione d'Italia. A popular hub for low-cost airlines, offering flights to many European cities.
- **Zurich Airport (ZRH)** – Approx. 85 km from Campione d'Italia. One of Europe's major international airports, offering a premium travel experience and global connections.

Via Posero, 22061 Campione d'Italia CO, Włochy

ACCESSIBILITY



- **By Car:** Tennis Campione is easily reachable by road, with highways providing smooth connections to Milan, Zurich, and other major cities.
- **By Train:** The nearest train station is in Lugano, approx. 10 km away, with fast connections to Milan and Zurich.
- **By Ferry:** Lake Lugano's ferry services offer scenic transportation options between various lakeside towns.

Via Posero, 22061 Campione d'Italia CO, Włochy